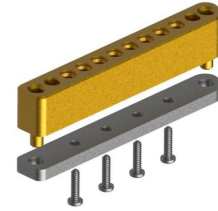


P/N: 125-SD1-108-1V



Technical data

Electrical data		
Impedance	50 Ω	
Dielectric withstanding voltage (AC)	500 Vrms	
Insulation resistance	$\geq 5000 M\Omega$	
Frequency range	DC~110GHz	
VSWR	2.0@67GHz	
Mechanical data		
Durability (mating)	≥ 500 Min	
Size	Length:31.48mm Width:4.42mm Hight:5.17mm	
Weight	8.6g	
Environmental data		
Temperature range	-40 to +120 $^{\circ}C$	
Material data		
Connector parts	Material	Plating
Body	Brass	Gold
Center contacts	Beryllium	Gold
Insulator	PTFE	

Mechanical Outline

