

## P/N: WC-06WF-E1

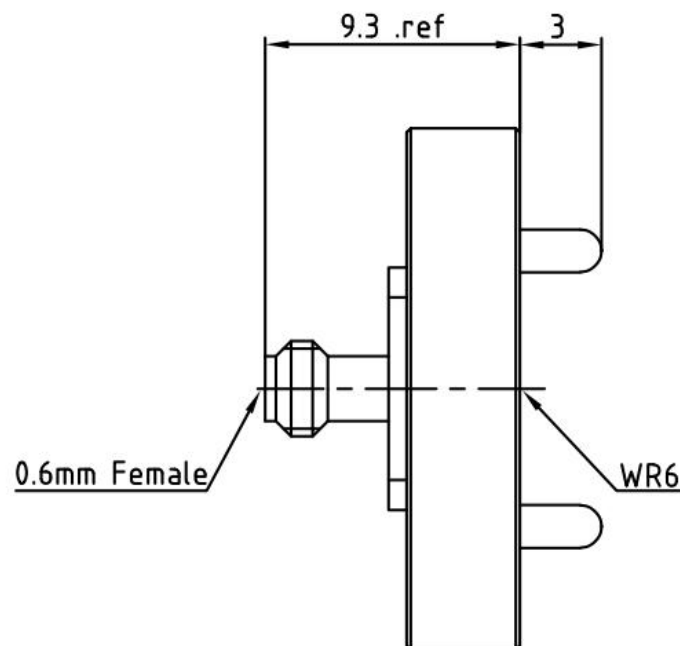
WC-06WM-E1 is end launch (180°) waveguide to coax adapters that cover the frequency range of 113 to 173 GHz. This is designed and manufactured for instrumentation grade quality but offered at a commercial grade price, allowing for an efficient transition between the rectangular waveguide and 0.6mm female coax connector.



## Mechanical data

Electrical data	
Impedance	50ohm
Frequency range	113~173GHz
Specification Temperature	+25°C
Operating Temperature	-40°C to +85°C
Insertion Loss	1.5dBmax
VSWR	1.6max
Mechanical data	
Order number	134030084
Waveguide Port	WR-06 with UG-387/U-M Anti-Cocking Flange
Coaxial Port	0.6 mm Female Coax Connector
Material	Brass
Finish	Gold Plated

## Outline



**Test Report**

